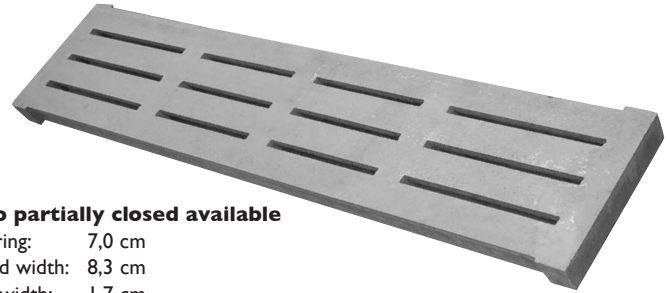


# OTTE Pig concrete slatted floor

## Pig concrete slatted floor 4-fold 40 cm wide (also available in 33,3 cm width)

- with continuous connection slot = highest cleanliness

length (all 10 cm)	installation height	weight (kg/m <sup>2</sup> )
70 cm - 170 cm	7 cm	119
180 cm - 200 cm	8 cm	136
210 cm - 240 cm	9 cm	148
250 cm - 270 cm	10 cm	166
280 cm - 300 cm	11 cm	183
310 cm - 320 cm	12 cm	200



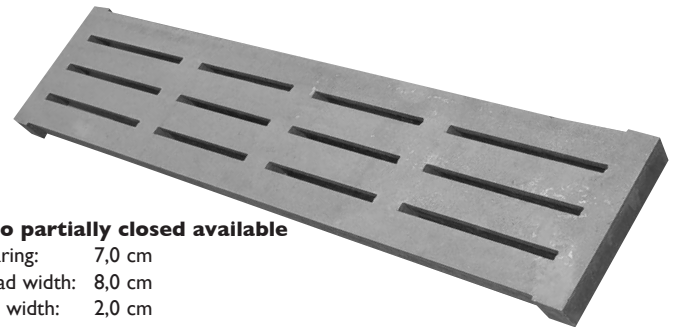
also partially closed available

bearing: 7,0 cm  
tread width: 8,3 cm  
gap width: 1,7 cm

## Pig concrete slatted floor 4-fold 40 cm wide (also available in 33,3 cm width)

- with continuous connection slot = highest cleanliness

length (all 10 cm)	installation height	weight (kg/m <sup>2</sup> )
70 cm - 170 cm	7 cm	118
180 cm - 200 cm	8 cm	135
210 cm - 240 cm	9 cm	146
250 cm - 270 cm	10 cm	164
280 cm - 300 cm	11 cm	181
310 cm - 320 cm	12 cm	198

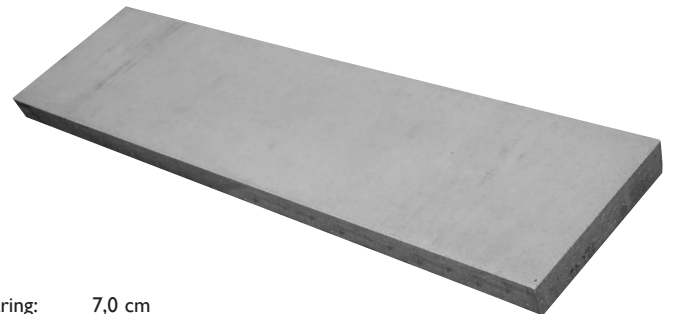


also partially closed available

bearing: 7,0 cm  
tread width: 8,0 cm  
gap width: 2,0 cm

## Partly slatted floor

length (all 10 cm)	installation height	weight (kg/m <sup>2</sup> )
70 cm - 170 cm	7 cm	139
180 cm - 200 cm	8 cm	146
210 cm - 240 cm	9 cm	155
250 cm - 270 cm	10 cm	177
280 cm - 300 cm	11 cm	195
310 cm - 320 cm	12 cm	213



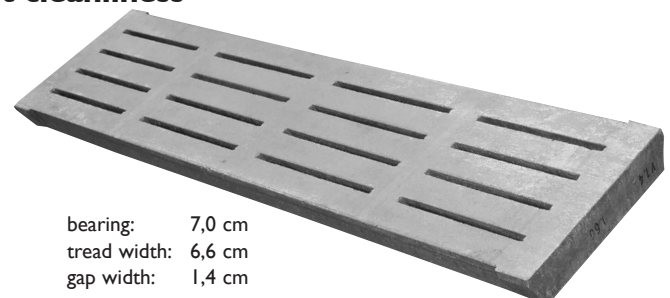
Bearing: 7,0 cm

## Weaners 5-fold 40 cm wide

- with continuous connection slot = highest cleanliness

length (all 10 cm)	installation height	weight (kg/m <sup>2</sup> )
70 cm - 250 cm	8 cm	132

- slip-proof and pet-friendly interface
- calculated static and embattled to DIN EN12737
- concrete strength class C 40/50



bearing: 7,0 cm  
tread width: 6,6 cm  
gap width: 1,4 cm